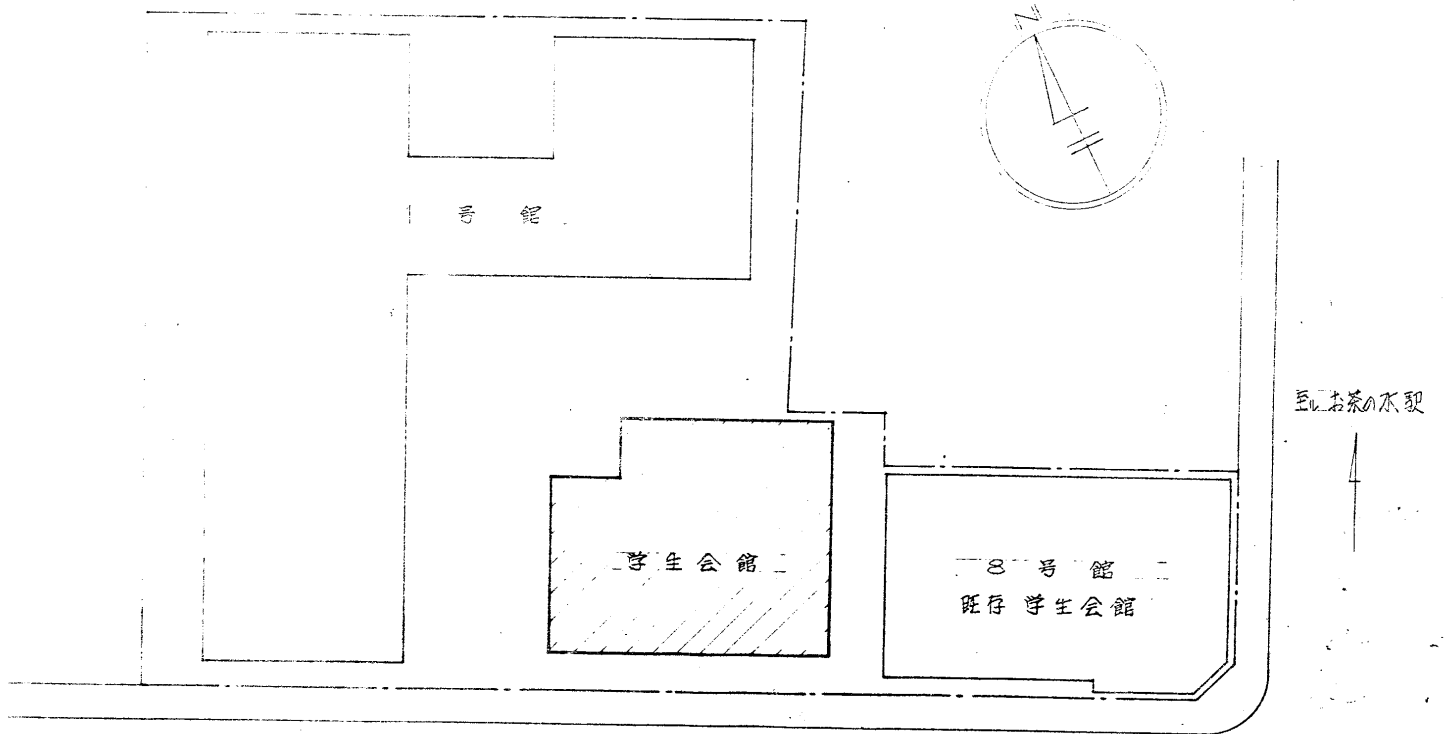


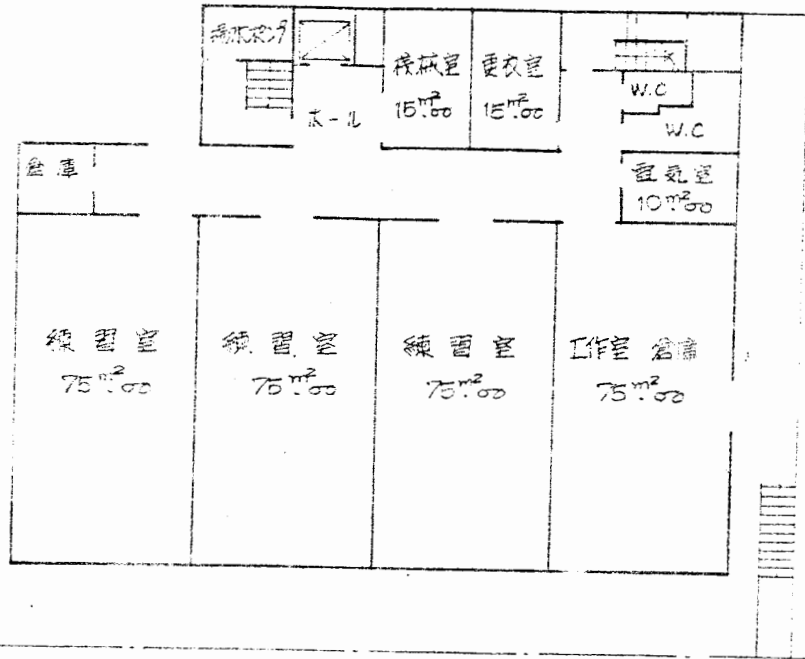
即日学生会館 配置圖 縮尺 1/400

建築面積 535.01^m2 163坪07

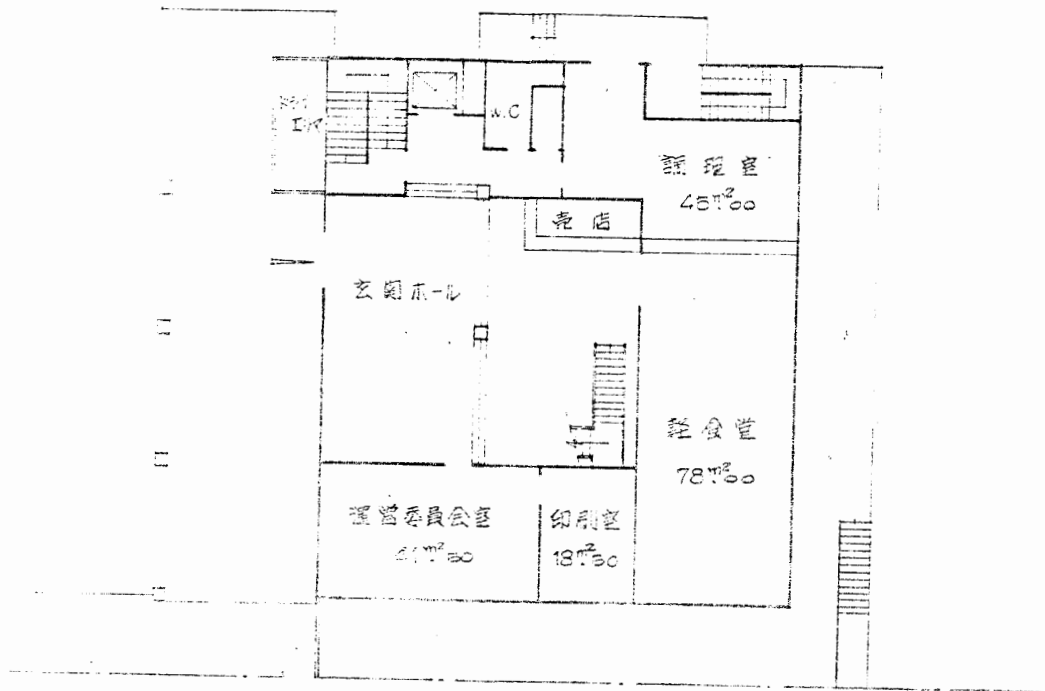
床面積 2,505.20^m2 758坪73

鉄筋コンクリート造 地下1階 地上5階建

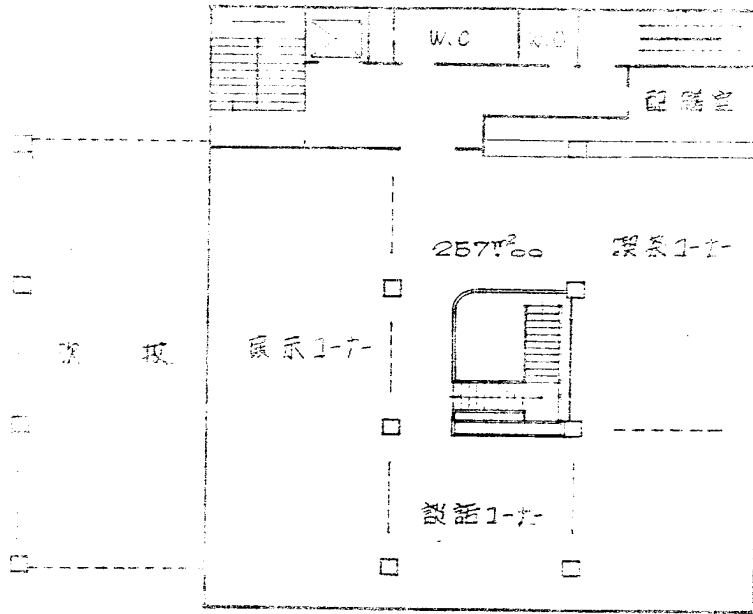




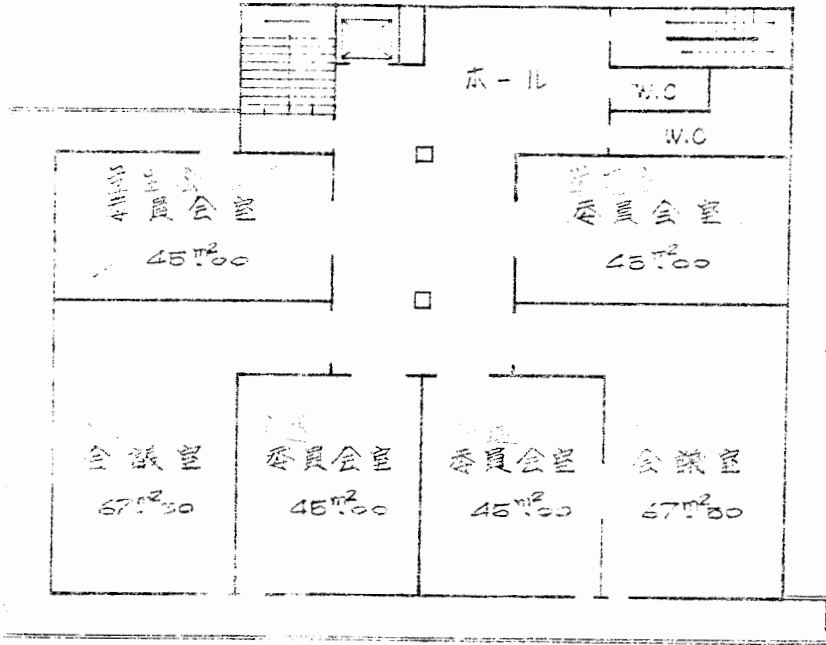
二 地階平面図 450m²80



1階平面図 360[㎡]00

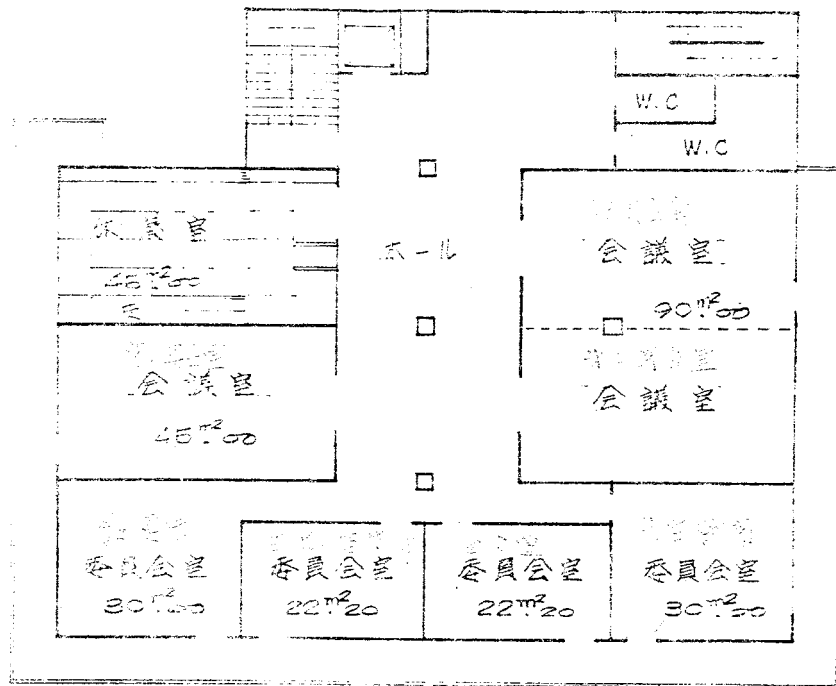


2 階平面図 286m²

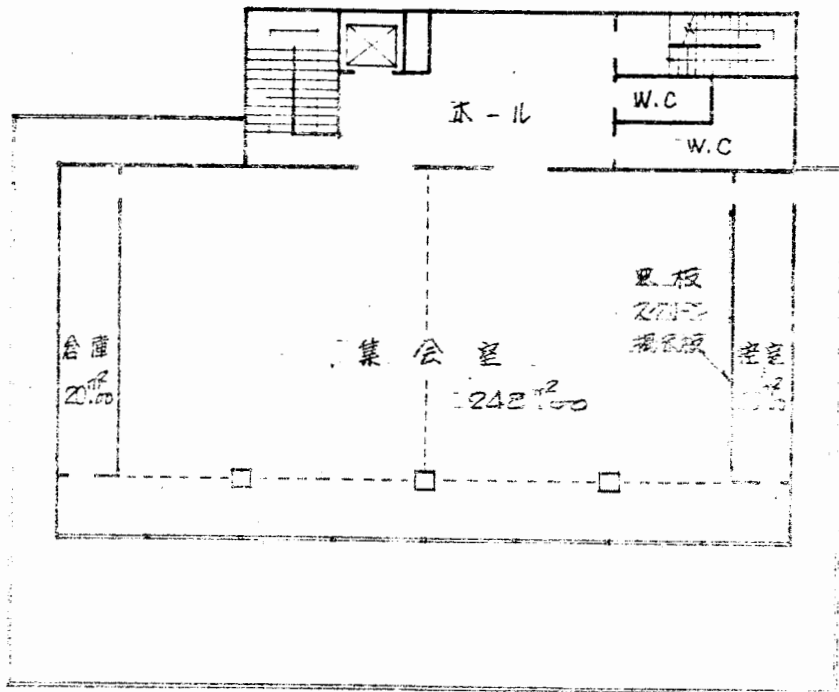


3階平面図

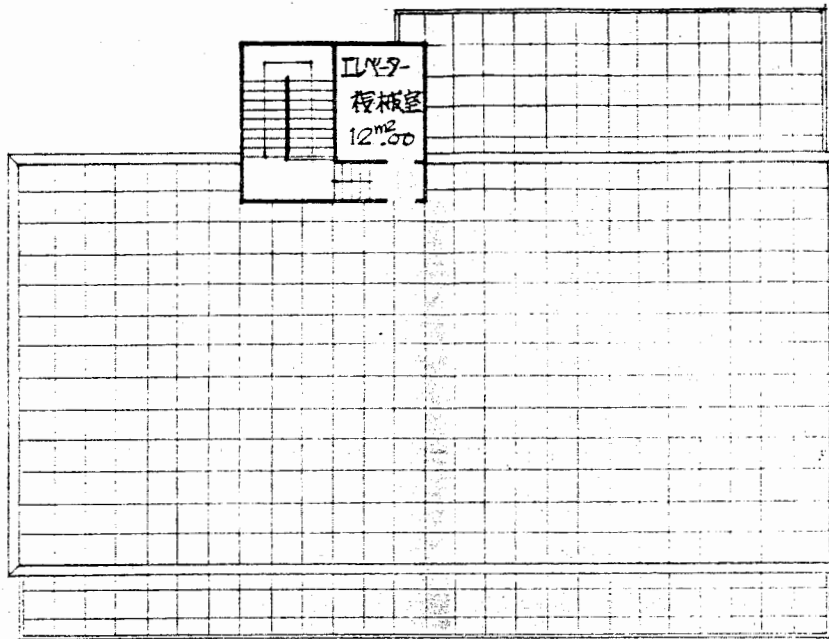
430.80



4階平面図 460M²80



5階平面図 372192



屋階平面圖 塔屋 30m².20